

Response of the zooplankton community to microhabitat variations in nearshore Long Point Bay and associated wetlands

Sarah Thomassen^{*},
Janice Gilbert[†],
Pat Chow-Fraser^{*}

^{*}McMaster University
Hamilton, ON

[†]Ministry of Natural Resources
Port Dover, ON

Zooplankton

- Three main types:

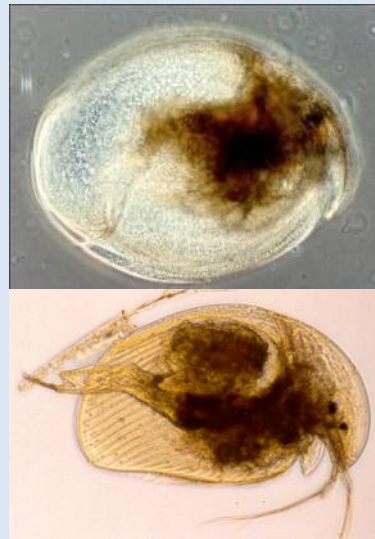
Rotifers

~50-150 μm



Cladocera

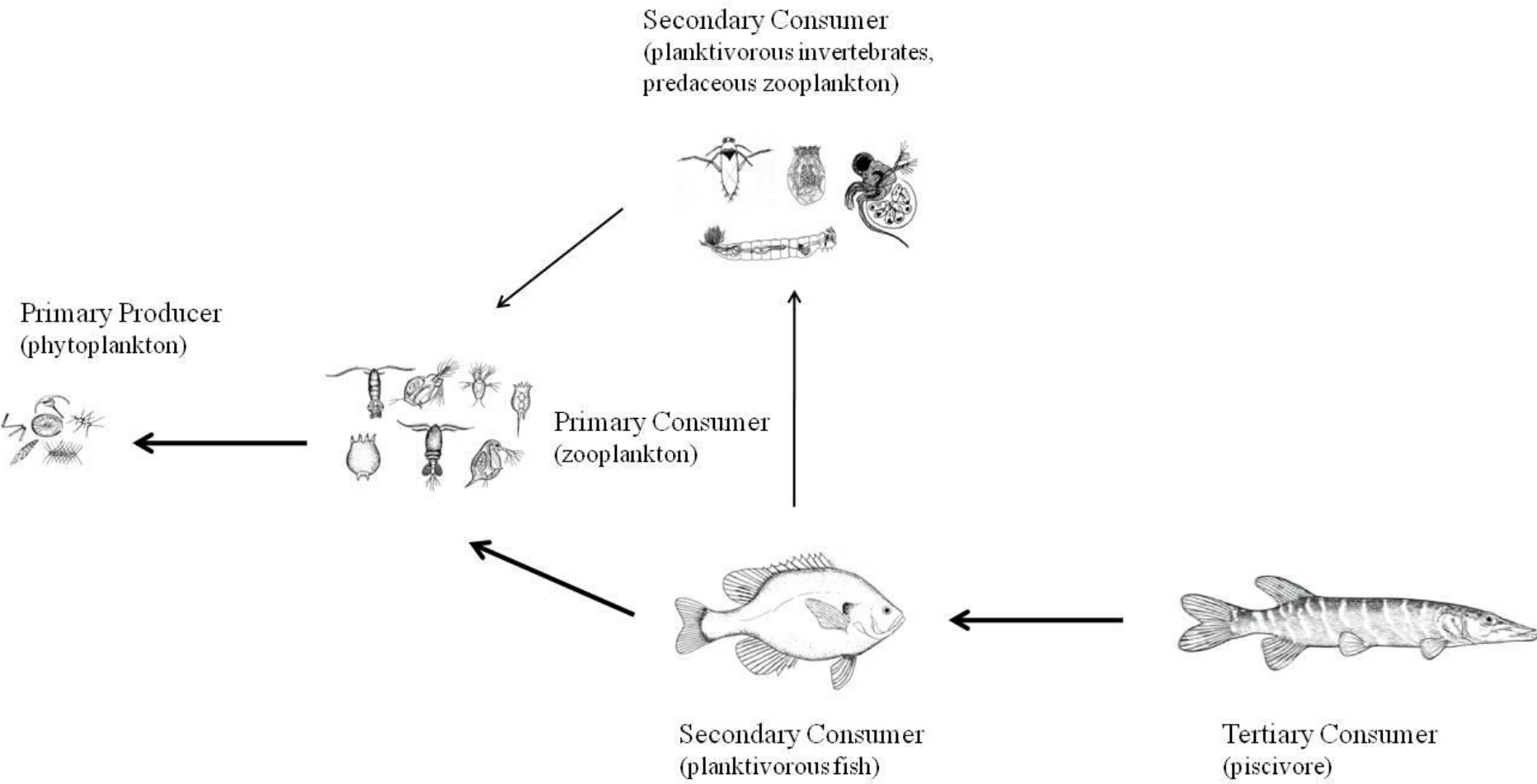
~ 200-3000 μm



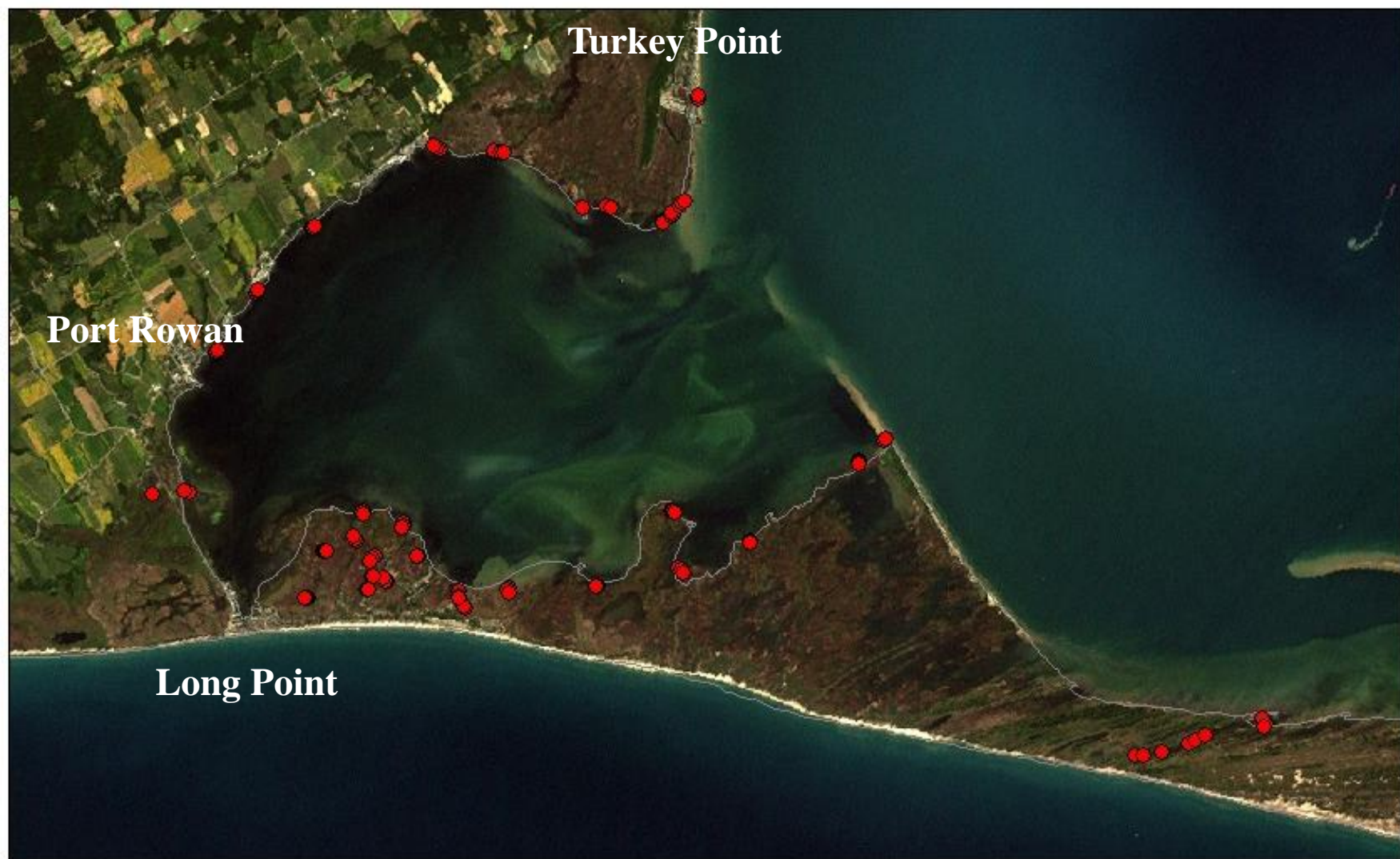
Copepods

~ 500-5000 μm





Long Point Zooplankton Sites 2008



0 1 2 4 6 8 Kilometers



Sampling methodology



- 5-L Schindler-Patalas trap
- 64- μm mesh
- Sampled over a 10-day period in August 2008

Environmental Variables

Total Suspended Solids (mg/L)

Chlorophyll a

Temperature (oC)

Conductivity (us/cm)

Dissolved Oxygen (mg/L)

pH

Total Nitrogen (ug/L)

Dissolved Organic Carbon (mg/L)

Depth (m)

Submergent plant taxa

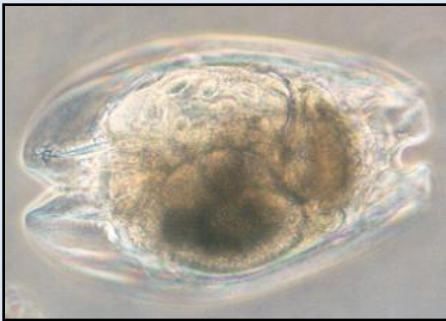
Plant taxa

Relative Exposure Index (REI) *Modified after Murphey and Fonseca, 1995

Zooplankton Community

- 65 taxa
- Common species include:

Euchlanis sp.



Polyarthra sp.



Bosmina longirostris



Ceriodaphnia sp.



Ordination

- Canonical correlation
- Non-metric multidimensional scaling
- Principal components analysis

Used to identify key microhabitat types and determine how the zooplankton assort among them.

Acknowledgements

Field and Technical Staff of the Chow-Fraser
Lab and OMNR Port Dover



Ministry of Natural Resources

Contact Information:

Sarah Thomassen

Email: thomas8@mcmaster.ca